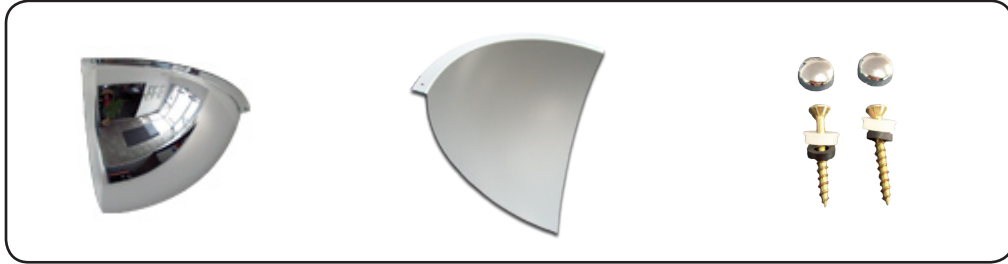




DuraVision™ Convex Mirror Product Sheet:



Indoor Quarter Dome

The Quarter Dome Mirror is suitable for corridors or internal corners where there is a high risk of collision. This long life quality mirror is simple to install and at a very competitive price.

When space is at a premium in retail stores, the Quarter Dome is fitted to the ceiling in 90° corners for optimal viewing over shelving and fixtures.

Features

- 2mm or 3mm acrylic face
- Pure reflective coating
- Dome top screws for attaching to the Ceiling

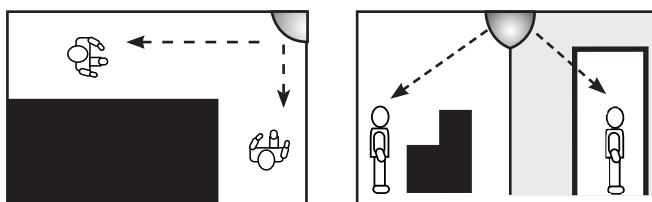
Suitable Uses

- Retail and Security surveillance
- Safety in busy corridors
- Right angle passageways in buildings
- Reception areas
- Above high shelving for 90° observation

Specifications

Code	Size	View Distance	Mirror Face	Fixing Hardware	Mounting Holes
18541H	300x300mm	Up to 3m	2mm Acrylic	Dome Capped Screws	2 x 5mm
18560H	450x450mm	Up to 6m	2mm Acrylic	Dome Capped Screws	2 x 5mm
18563H	600x600mm	Up to 10m	3mm Acrylic	Dome Capped Screws	2 x 5mm

Positioning



Situation Images:



▶ Factory Corridors



▶ Retail Observation



▶ Reception Entrance

DuraVision™ Mirror Systems

Find out more about the great range of DuraVision Mirror Systems at our website...



www.duravision.net