

What's Inside



PARTS LIST:

- 1 X POE+ Converter
- 1 X USB-C to USB-C (right angle)

GENERAL INSTALLATION

Your new PoE converter is designed to be simple to install and set up. It is small and light enough to leave "inline" with your network cable.

You may also choose to use four Keystone 616 mounting brackets to wall mount the device.

Otherwise, the GAT-USBC-PD-V3 fits many single gang wall boxes and all dual gang wall boxes.

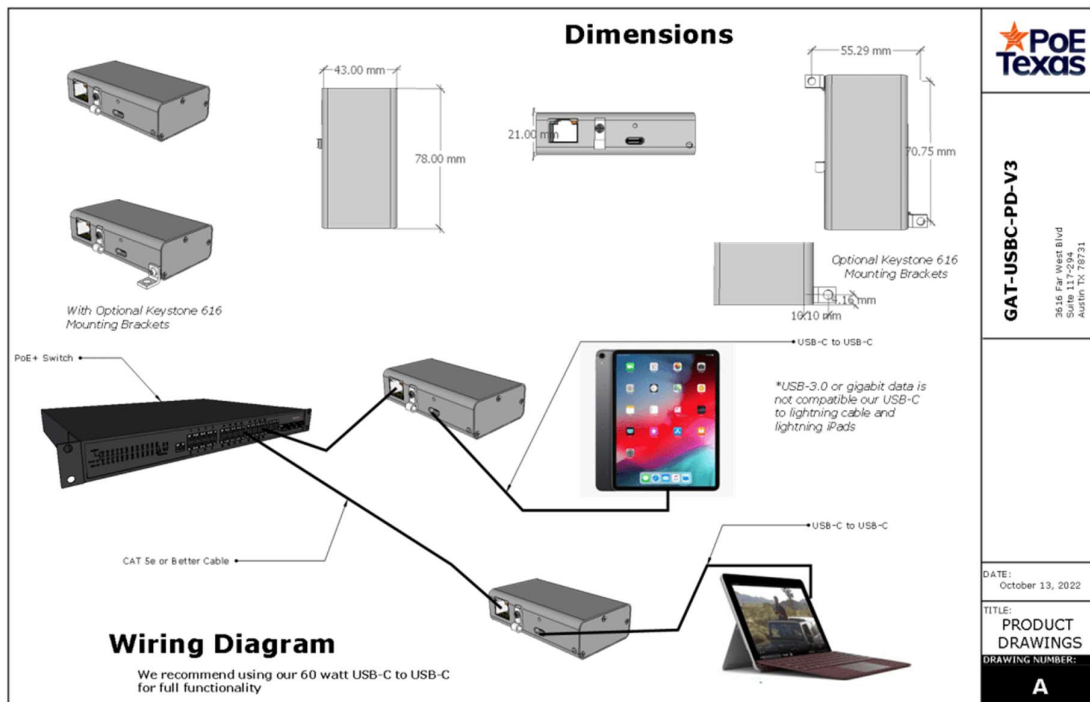
Once it is in place, simply follow these steps in order:

1 – Plug the RJ-45 end into an IEEE 802.3at PoE (POE+) or 48-56 volt passive Power Sourcing Equipment (PSE) with a data source

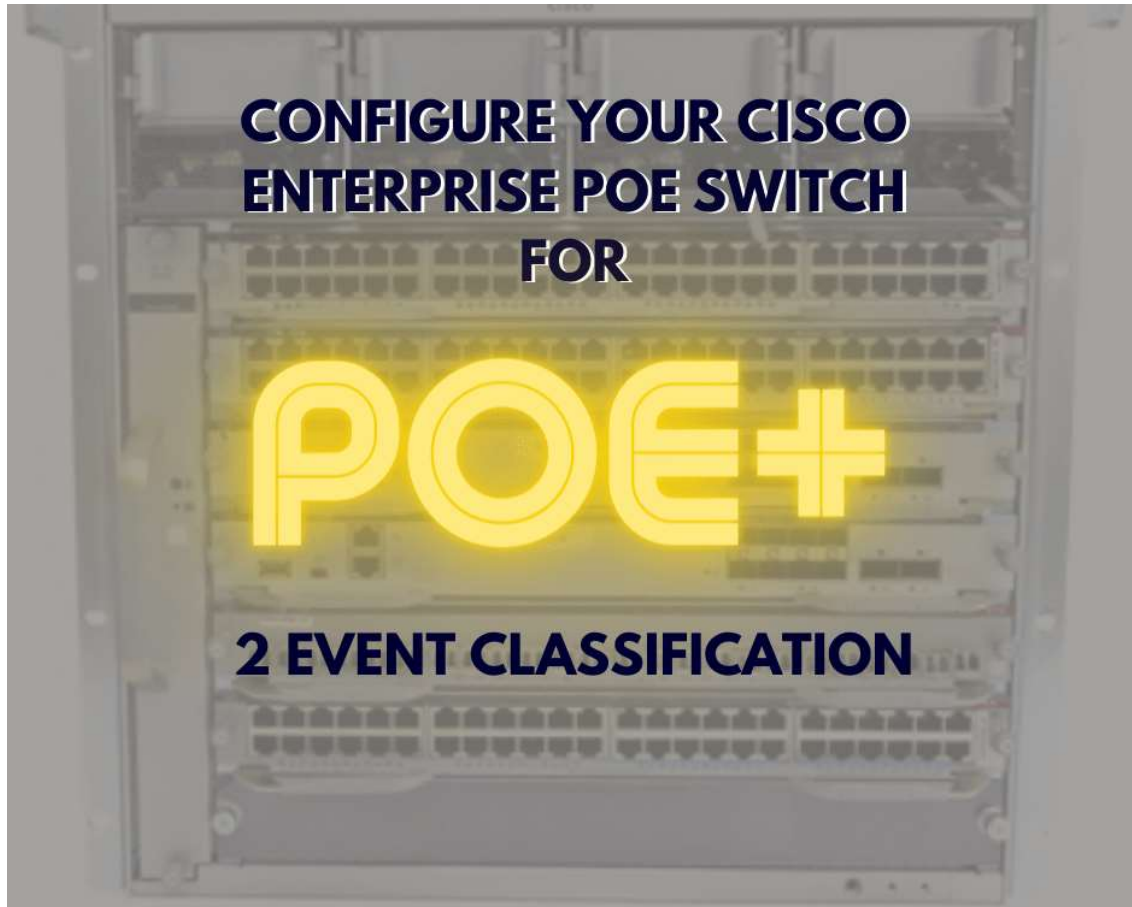
2 – Ensure the device you're connecting to is on and logged in

3 – Plug the USB-C connector into the device

The converter will automatically set up the network connection with your device and begin charging. To confirm that, go to the General settings tab or look for the <...> symbol next to Ethernet.



CONFIGURATION



Configuring Your Cisco Enterprise PoE Switch for 2 Event PoE Classification

Yeah, I know that's a mouthful. Here's the simple translation. Cisco enterprise switches including the 9400 and 9300 models, which is a lot of them, come with a default setting that makes them less compatible PoE+ devices like the GAT-USBC-PD. You'll know the setting isn't right because our device won't power on correctly, and your device won't charge. How frustrating!

It's a simple enough fix. You simply need to configure the ports that will power the GAT-USBC-PD to have 2 event classification. You can find the Cisco documentation on how to do that here: [CONFIGURE MY SWITCH](#)

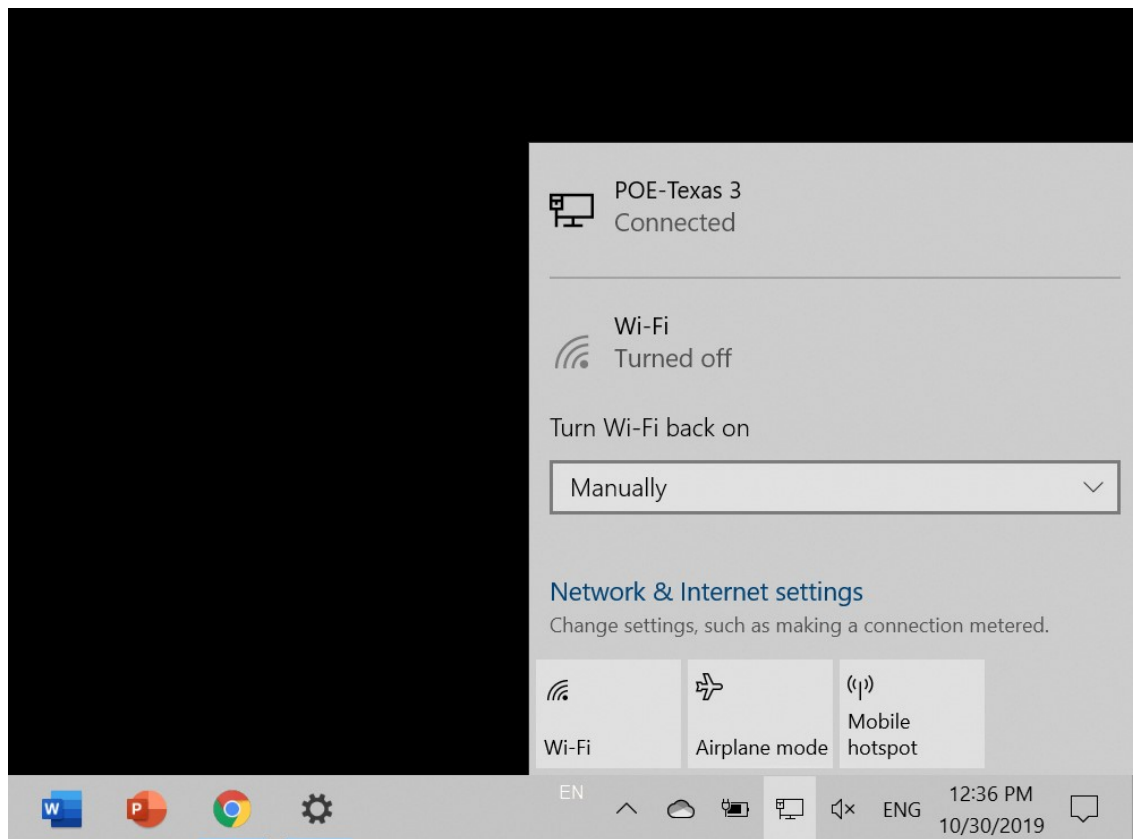
Or here are the steps you take after you've logged into the terminal.

```
Switch> enable
Switch# configure terminal
Switch(config)# interface gigabitethernet2/0/1

Switch(config-if)# power inline port 2-event
Switch(config-if)# end
```

Microsoft Surface Go

There's no configuration necessary for your Microsoft Surface products. You can simply use the connection as an Ethernet connection on the device.



iPad Pro Gen 3

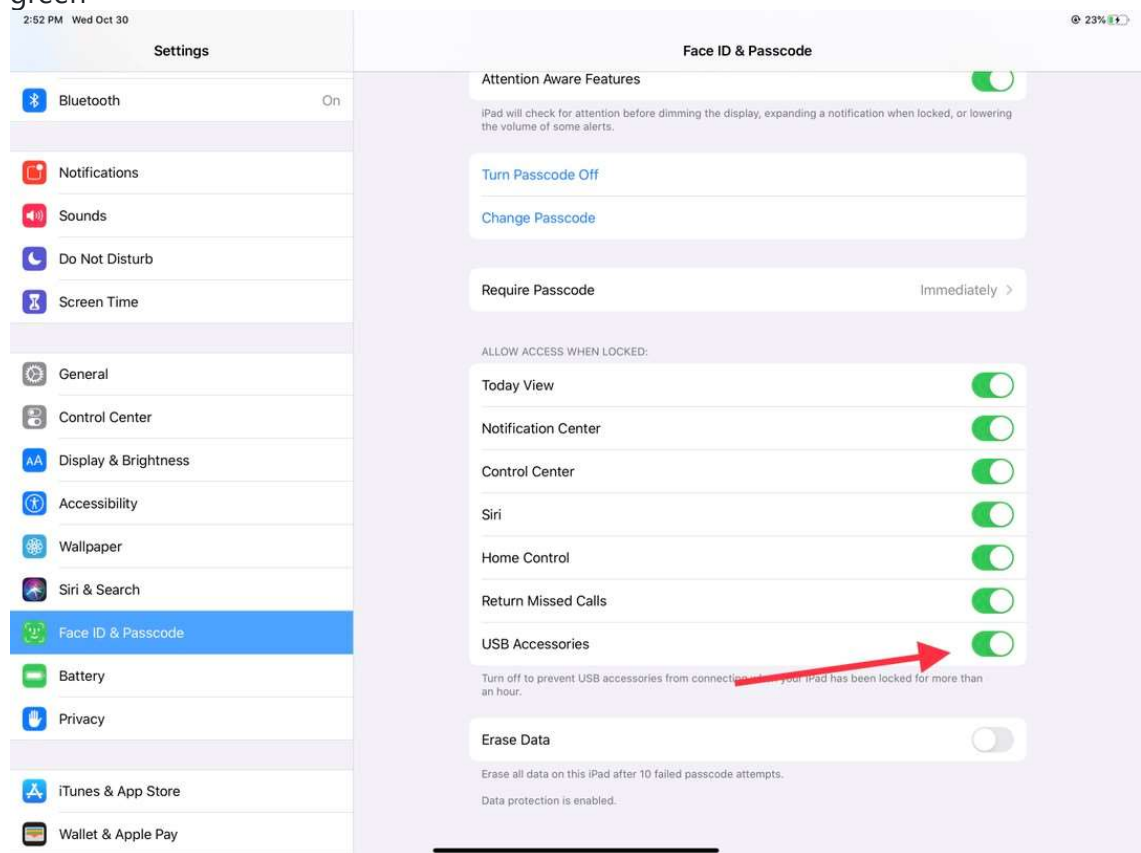
Configuring Your iPad for Wired Data

There are a couple easy steps for configuring your iPad to get the best results when working with wired data.

First, we're going to enable USB devices to allow charging even when the iPad is "off" or the screen is locked.

If you don't have the most up to date iOS software, take this time to update to iOS 12.2 or later. Otherwise, it will prevent any connected device from charging or communicating with it after the screen has been locked for an hour. Here's how to fix that:

- Navigate to the Settings tab
- Select Face ID & Passcode
- Ensure the USB Accessories button is toggled to "On" meaning you see the green



Settings



Apple ID, iCloud, iTunes & App St...

iPad Not Backed Up >



Airplane Mode



Wi-Fi

Not Connected



Bluetooth

On



Notifications



Control Center



Do Not Disturb



General



Display & Brightness



Wallpaper



Sounds



Siri & Search



Touch ID & Passcode



Battery



Privacy

Display & Brightness

BRIGHTNESS



Night Shift

Off >

Auto-Lock

Never >

Text Size



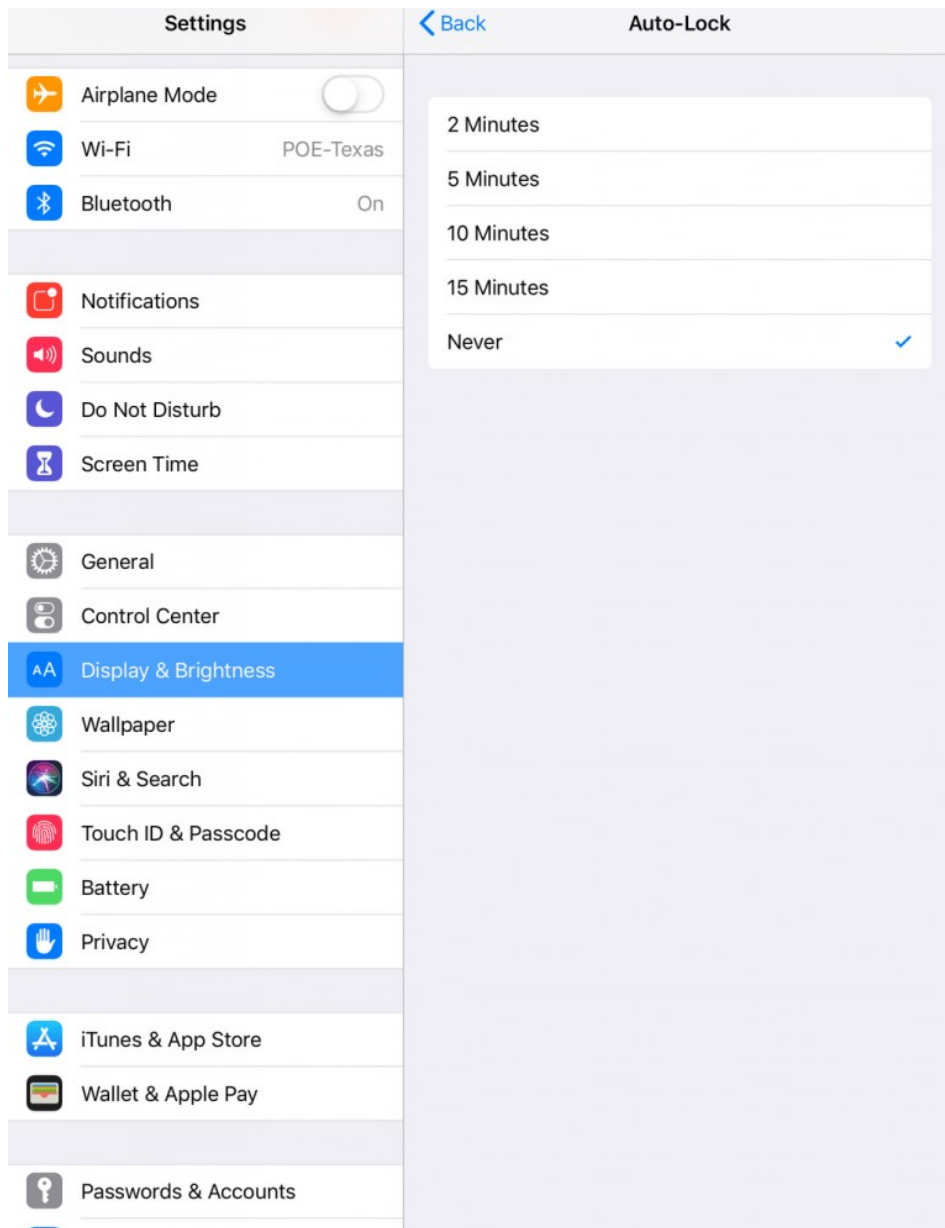
Bold Text

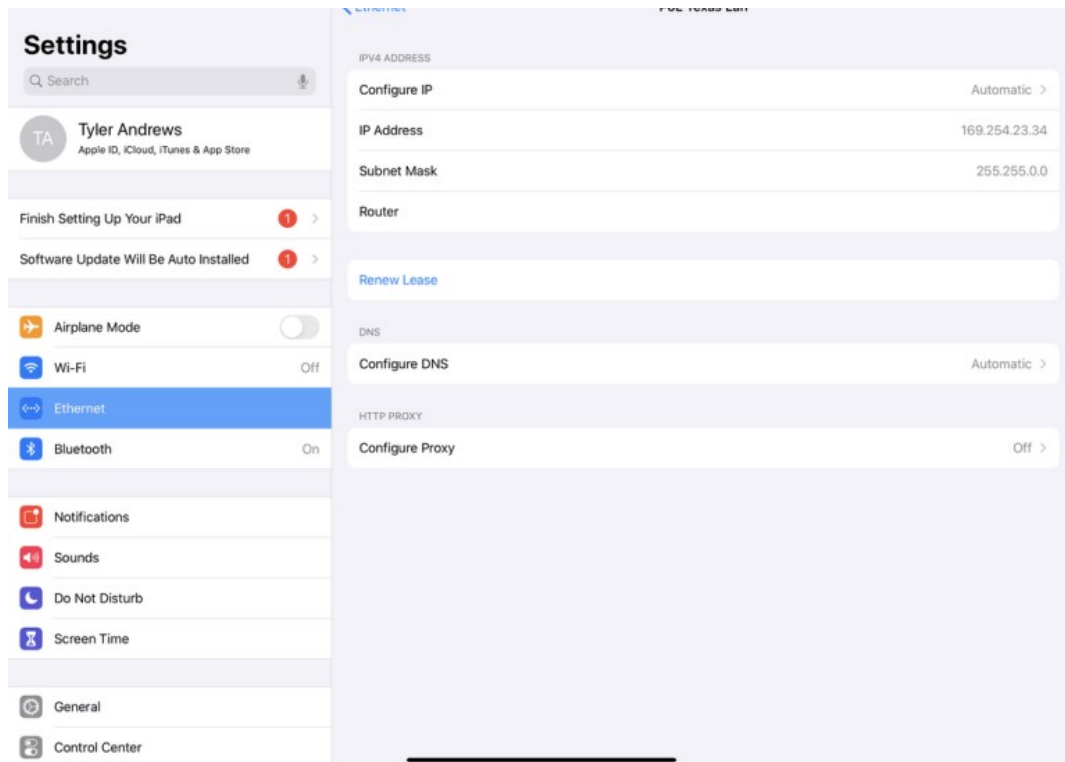


You can still set up your iPad to not automatically lock on a timer. When the screen locks if you would like the screen always on.

- Go to the Settings icon on your iPad
- Select Display & Brightness
- Select Auto Lock
- Set the limit to Never

The splitter will auto-configure the IP settings to default as soon as you connect it up including Dynamic IP addressing.





1. Navigate to General Settings, then you'll see a symbol for the LAN <...>
2. Select this and you'll see the option for PoE Texas LAN, select it

You'll see your IPV4 IP address information. If it shows "Automatic", that means your getting a dynamically assigned IP address.

If you'd like to reconfigure the IP address, DNS, and HTTP Proxy settings, you can do that by selecting these options.

The most used option will be fixing your IP address by selecting the "Automatic" button.

For the other networks settings, we'd recommend talking to a service provider or give us a call: 512-479-0317 or service@poetexas.com.

Best Practices for iOS Updates

Despite Apple's excellent reputation for ensuring backward compatibility with their iPads and iPhones, practical experience with a recent iOS update has revealed that even they can miss things which can temporarily lead to disruption of service for your device. If your device must be reliable 24/7, we recommend these following best practices:

- Go to Settings -> General -> Software Updates -> Automatic Updates

- Deselect “Install iPadOS Updates”
- Before choosing to install the next update, please check into our iOS Compatibility Table to check whether we have finished testing the performance of a new iPadOS version

iOS Compatibility Table

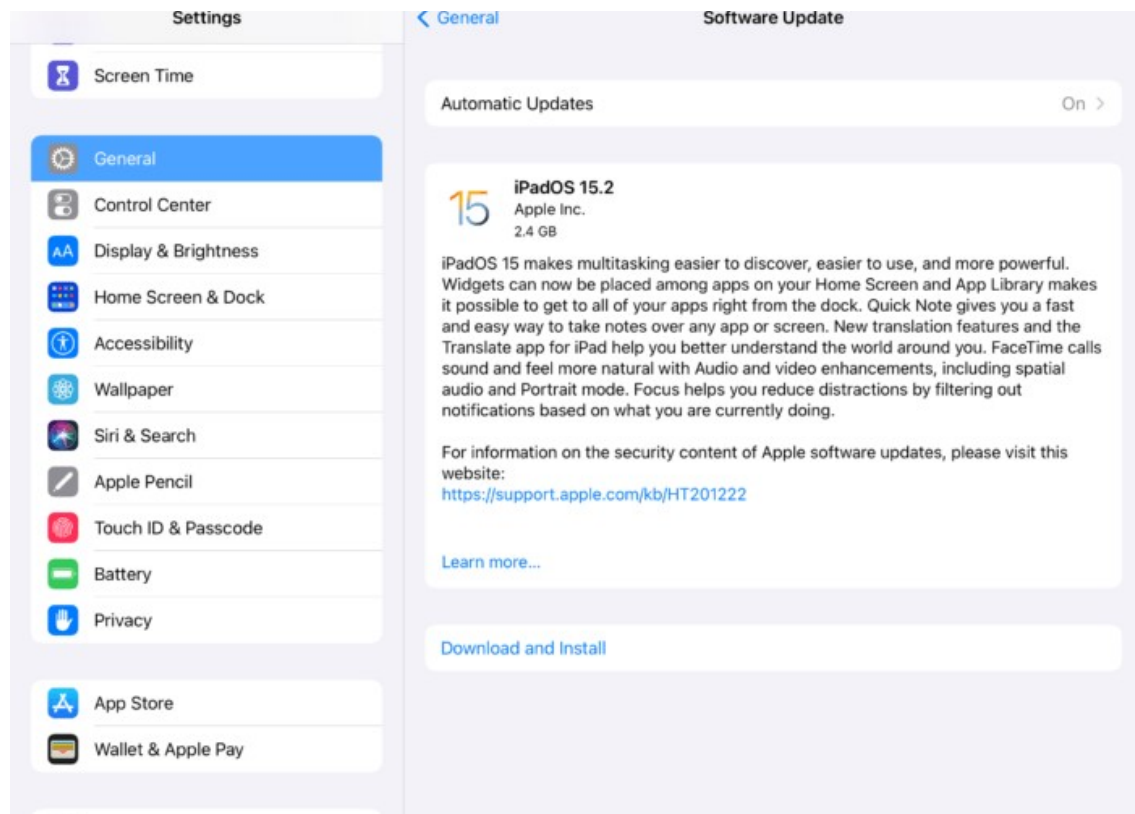
- Finally, to get emailed live updates on iOS compatibility, subscribe to our mailing list for iOS compatibility

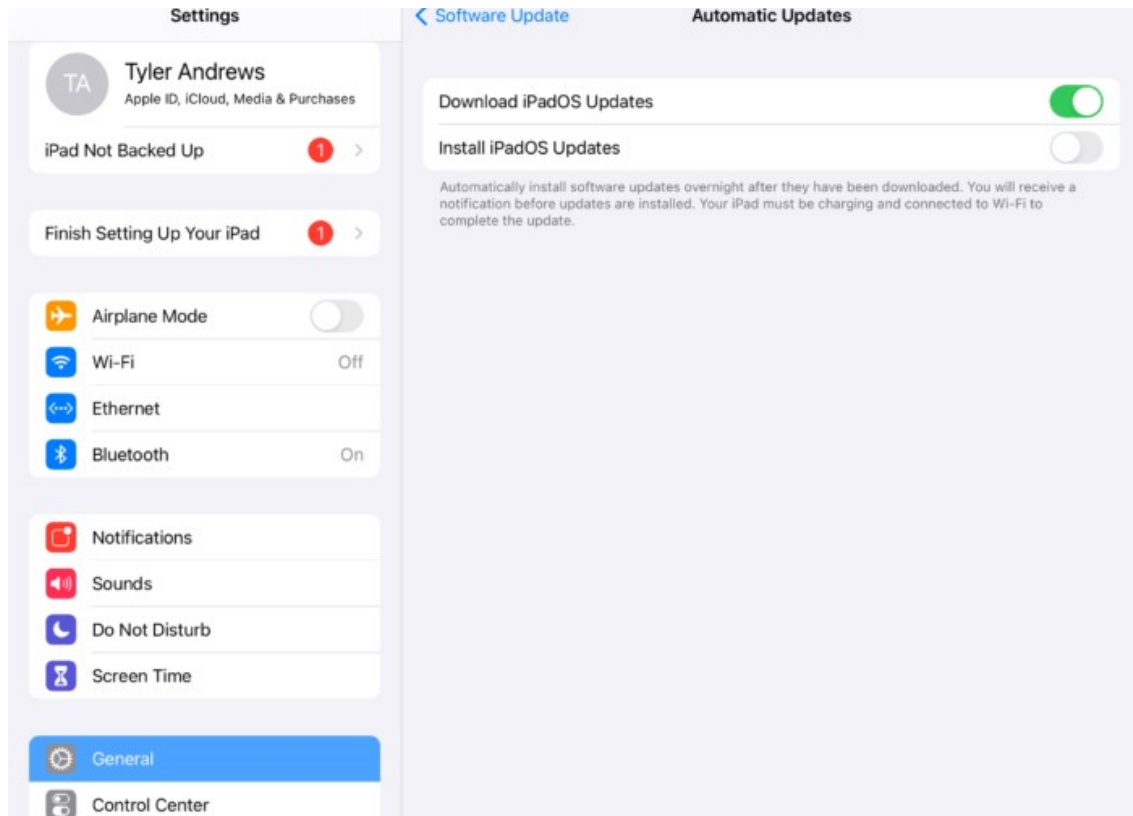
Fields marked with an * are required

First Name

Last Name

Email *

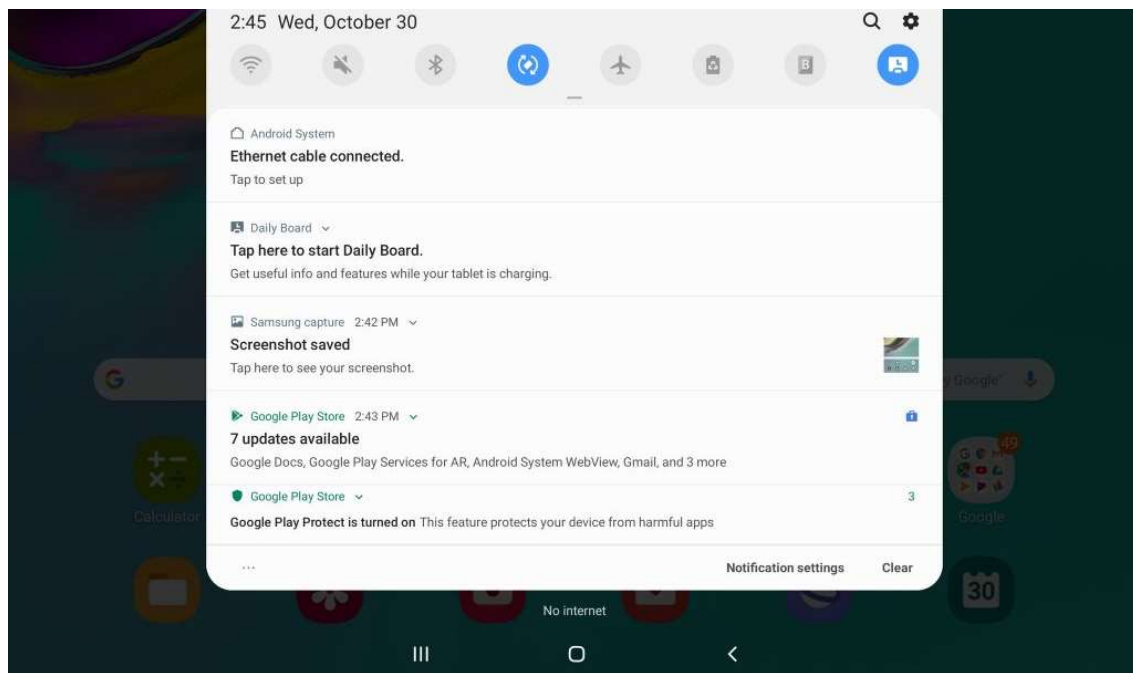




Android (Samsung Tab and Google Pixel)

If you're using a Samsung Tab A model year prior to 2019, you may experience some difficulties establishing the wired data connection. Please contact service@poetexas.com if you're experiencing compatibility issues with your Samsung device.

Otherwise, simply confirm the data by looking for the Ethernet symbol on the upper right.



Technical Specifications

Product Specifications

Adapters included	USB-C to USB-C Right Angle Bi-directional cable
Connector Types	USB-C
Data Rate	(Input) 10/100/1000 Gigabit / (Output) 10/100/1000 Mbps
Data Standard	USB 3.0 (Output)
Input voltage	48-56V
LEDs Per Port	Green (POE) / Yellow (USB-C)
Max Power for Kit	25 Watts
Mount Type	Wall or Inline
Operating Humidity	-10 – 60C
Output Voltage	5V,2.6A; 9V,1.78A; 12V,1.34A; 15V,1.37A; 20V,1.15A
PoE Method	IEEE 802.3at
PoE Standard	IEEE 802.3at
Weight	3 oz.